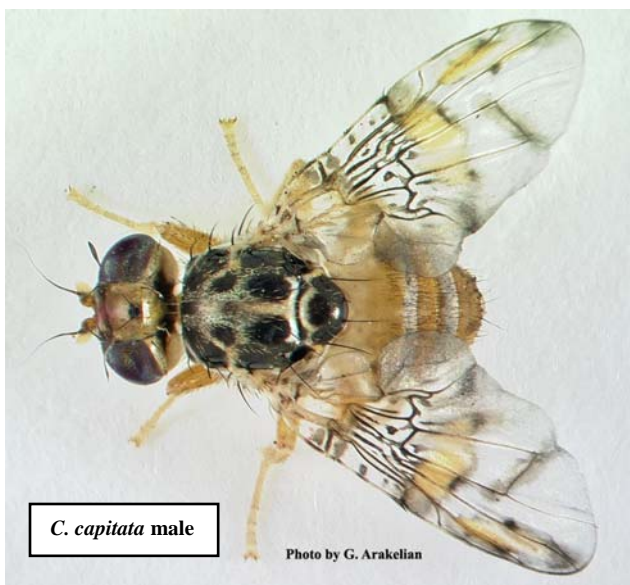


WANTED!

MEDITERRANEAN FRUIT FLY*



Larvae in orange

Names/Aliases: Mediterranean fruit fly (*Ceratitidis capitata*) or Medfly

Last Known Address: Africa, southern Europe, Middle East, Australia, South and Central America. In the U.S.: Hawaii.

Field ID: Slightly smaller than a housefly. It has creamy yellow thorax with characteristic pattern of black areas. Wings with distinctive yellow, black and brown markings. Larvae are legless, creamy white with cylindrical bodies narrowed at the anterior end. They develop inside the fruit and later enter the soil to pupate.

CAUTION

Mediterranean fruit fly is recorded from more than 300 plants, including apple, apricot, avocado, cherry, cherimoya, citrus, coffee, fig, guava, jujube, loquat, mango, papaya, peach, pear, persimmon, sapote, tomato, walnut, etc. Larvae feed inside the fruit making it unfit for consumption.



- LOS ANGELES COUNTY -
DEPARTMENT OF AGRICULTURAL COMMISSIONER/
WEIGHTS AND MEASURES

<http://acwm.lacounty.gov/scripts/pestpdf.htm>



Prepared by G. Arakelian, Ph. D.

* If you see this villain please notify your local Agricultural Commissioner's Office!