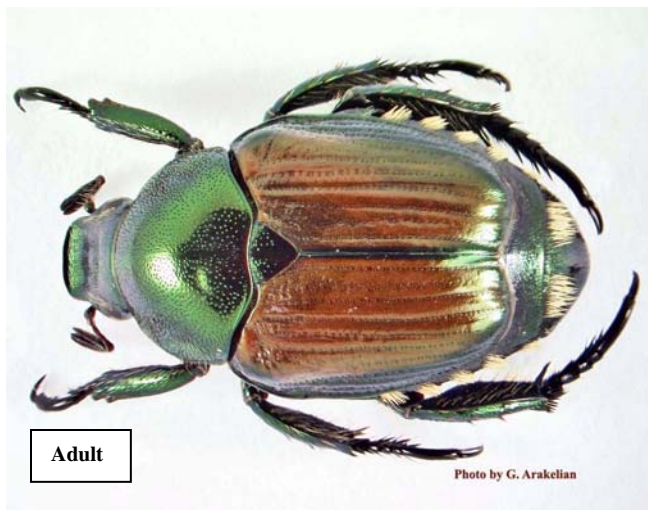


WANTED!

JAPANESE BEETLE*



Names/Aliases: Japanese beetle (*Popillia japonica*)

Last Known Address: Japan, China, Canada, Portugal, and Russia. Introduced and widespread in eastern and southeastern U.S.

Field ID: Adults (about 8-11 mm long) have oval, mainly metallic green bodies. Coppery-brown forewings do not cover abdomen entirely and expose five patches of white hairs on each lateral side and a pair of white hair tufts on the last abdominal segment. Females are slightly larger than males. Larva can reach a length of about 25-30 mm and has creamy-white, C-shaped body with three pairs of legs and light brown head.

CAUTION

Feeds on nearly 300 species of plants. Adults attack foliage, flowers and fruit of plants. Larvae (grubs) feed on roots and often cause significant damage, especially to turfgrasses and seedlings of ornamental and commercial plants.



- LOS ANGELES COUNTY -
DEPARTMENT OF AGRICULTURAL COMMISSIONER/
WEIGHTS AND MEASURES

<http://acwm.lacounty.gov/scripts/pestpdf.htm>



Prepared by G. Arakelian, Ph.D.

* If you see this villain please notify your local Agricultural Commissioner's Office!