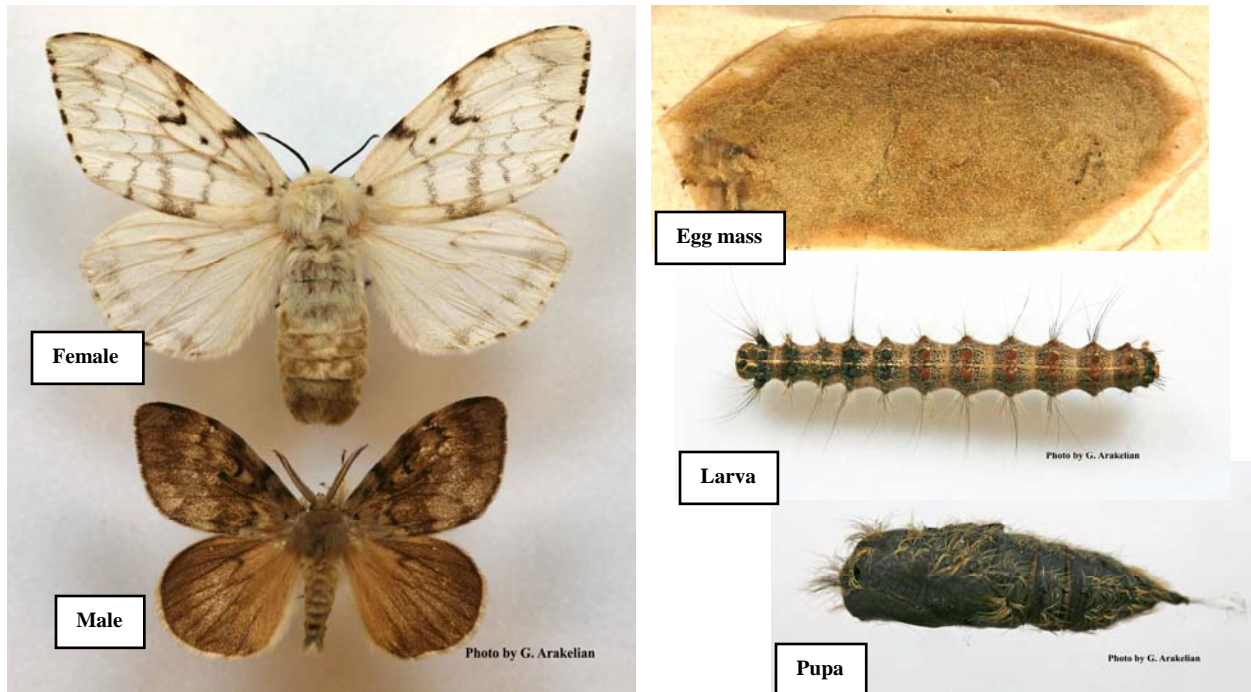


WANTED!

GYPSY MOTH*



Names/Aliases: Gypsy moth (*Lymantria dispar*)

Last Known Address: Widely distributed in Eurasia. Found also in northern Africa and eastern Canada. In the U.S.: the entire Northeast and portions of the Southeast and Midwest.

Field ID: Females (wingspan 55-65 mm) are stout with mainly white coloration. Males (wingspan up to 40 mm) are relatively smaller and slender and are mostly brown. Forewings (both sexes) with dark wavy pattern. Mature larvae have 5 pairs of blue tubercles on their backs followed by 6 pairs of red tubercles. Pupae are dark reddish-brown. Ovoid egg masses are covered with yellowish hairs which give them velvety look.

CAUTION

Recorded on over 500 plant species. A serious pest of many conifers and broadleaf trees in forests and urban areas. Larvae often defoliate and kill their host plants.



- LOS ANGELES COUNTY -
DEPARTMENT OF AGRICULTURAL COMMISSIONER/
WEIGHTS AND MEASURES

<http://acwm.lacounty.gov/scripts/pestpdf.htm>



Prepared by G. Arakelian, Ph.D.

* If you see this villain please notify your local Agricultural Commissioner's Office!