

Mediterranean fruit fly

G. Arakelian

**County of Los Angeles
Board of Supervisors**

Gloria Molina
First District

Mark Ridley-Thomas
Second District

Zev Yaroslavsky
Third District

Don Knabe
Fourth District

Michael D. Antonovich
Fifth District



**County of Los Angeles
Department of
Agricultural Commissioner/
Weights and Measures**

**Entomology Laboratory
Services**

Entomology Laboratory
County of Los Angeles
Department of Agricultural Commissioner/
Weights and Measures
11012 S. Garfield Ave.
South Gate, CA 90280
Tel: (562) 622-0431
Fax: (562) 622-0717

Visit our website for pest information at
<http://acwm.lacounty.gov/scripts/pestpdf.htm>



Japanese beetle

Photo by G. Arakelian



Diaprepes root weevil

Photo by G. Arakelian



Dr. Gevork Arakelian, Senior Biologist/Entomologist

Kurt E. Floren
Agricultural Commissioner/
Director of Weights and Measures

Entomology Laboratory Services

About the Laboratory

The primary mission of the Entomology Laboratory is to safeguard the environment, residents, and growers by identifying exotic insects (and other invertebrates) entering Los Angeles County through truck, ship, airfreight, and parcel delivery operations.

The laboratory provides rapid and accurate identifications to support the department's Pest Detection and Pest Exclusion programs and offers identification and information services to Los Angeles County residents, schools, pest control operators, governmental agencies, growers, and nurseries. Services provided by the laboratory are free.



Public outreach activities of the Entomology Laboratory encompass broad interactions with governmental and private entities through lectures, workshops, and participation in various exhibits and fairs. Laboratory staff also seeks to increase public awareness of new invertebrate pest species by maintaining the "Insects and Other Invertebrates in California" page on the website of Los Angeles County Department of Agricultural Commissioner/Weights and Measures:

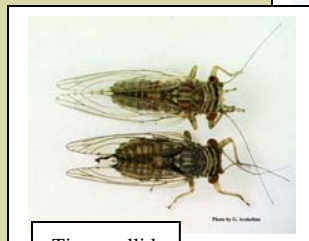
<http://acwm.lacounty.gov/scripts/pestpdf.htm>



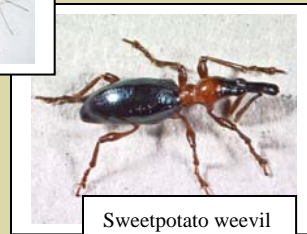
Brown widow spider



Bagraida bug



Tipu psyllid



Sweetpotato weevil

Our Scientific Resources

- A reference collection of over 80,000 invertebrate specimens, including about 45,000 pinned specimens, 30,000 samples preserved in alcohol vials, and 8,000 samples mounted on microscope slides.
- A library comprising over 5,000 reprints and books, as well as various insect identification software.
- Stereo and compound microscopes with high resolution digital cameras and image processing software.
- Archived pest image database of more than 4,000 photos.

