

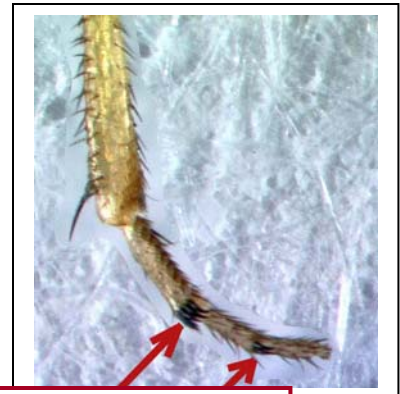
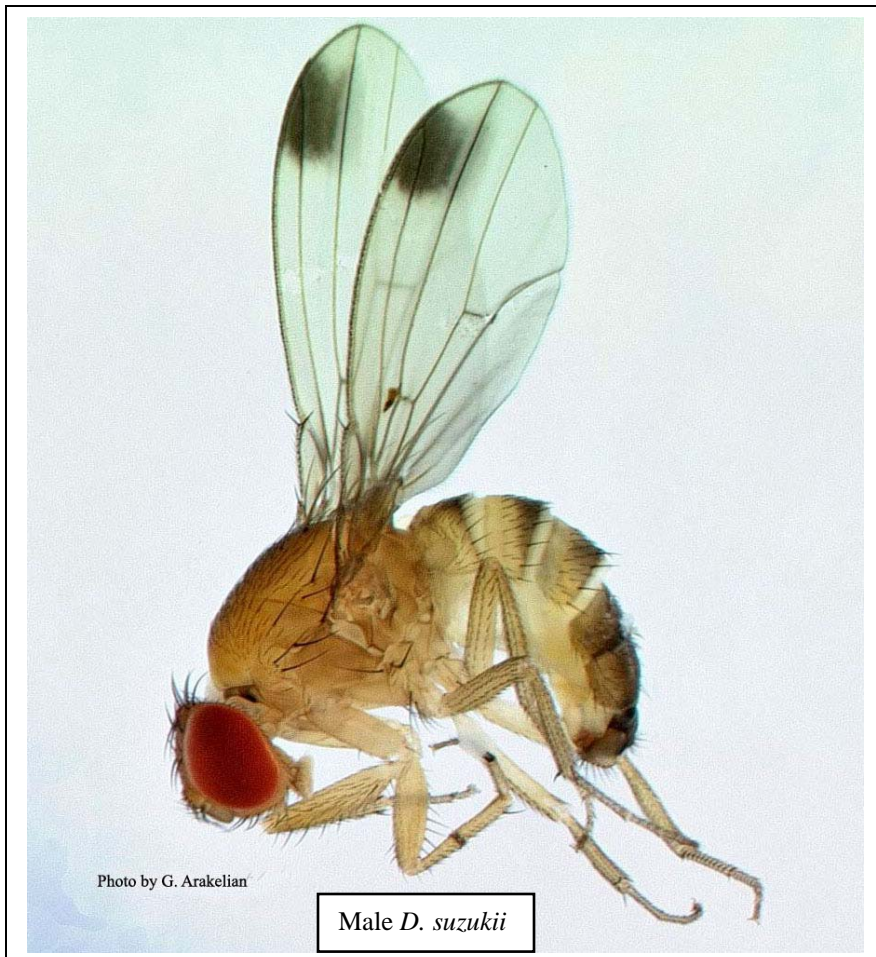
## Cherry Vinegar Fly (*Drosophila suzukii*)

**Distribution:** Occurs in China, Japan, Korea, Spain, and Thailand. In the U.S.: Hawaii and California.

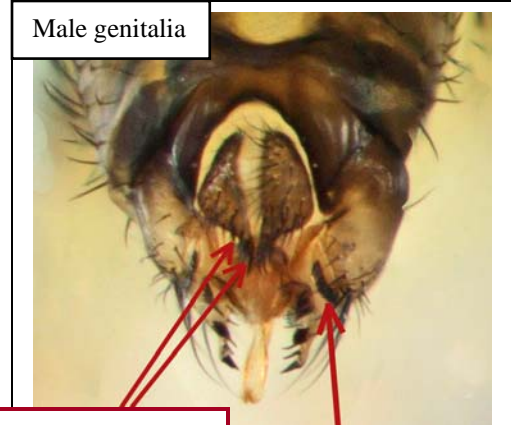
**Hosts and Damage:** Known to infest fresh, ripe cherries, blackberries, blueberries, raspberries, strawberries, etc.

**Field ID: Adults** are brownish yellow flies with black bands on the abdomen. Eyes are bright red. Male (about 2.6-2.8 mm long) with black spots on wings and two rows of combs on each fore tarsus; genitalia with several stout clasper bristles and thickened bristles on anal plate. Females (about 3.2-3.4 mm long) without tarsal combs and markings on the wings.

**Larva (maggot)** with white, cylindrical body tapered anteriorly and elevated posterior spiracles.

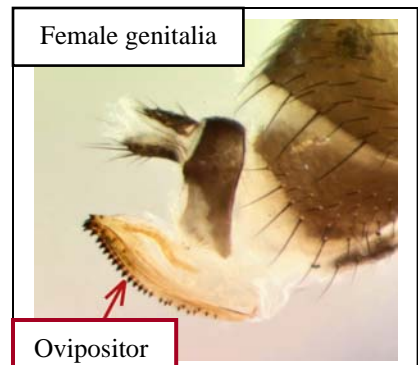
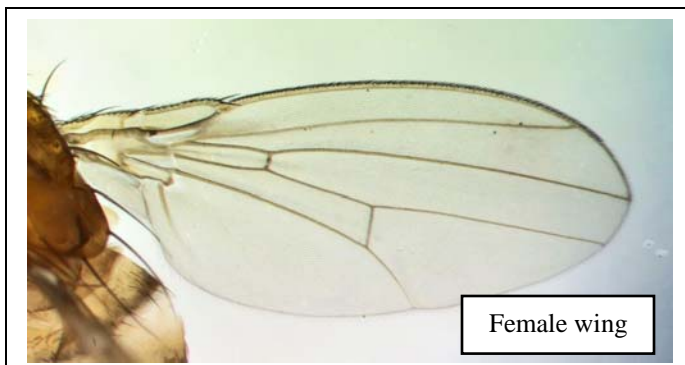


Combs on fore tarsus (male)



Thickened bristles on anal plate

Stout clasper bristles



Ovipositor